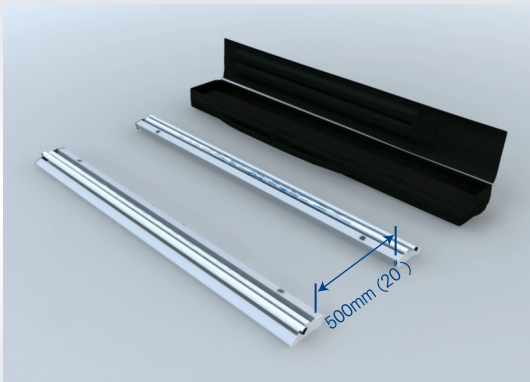


SET UP

INSTRUCTION

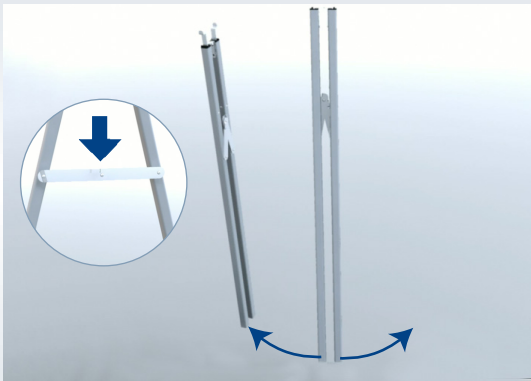
ARENA

1



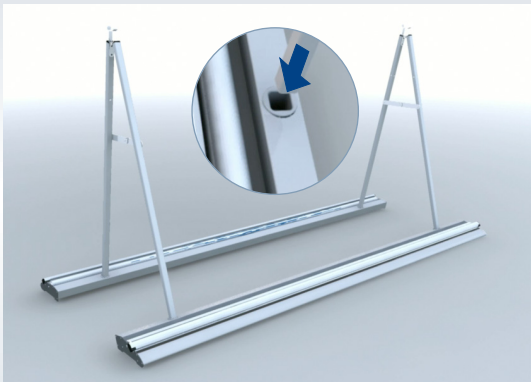
Take the two cassettes out of the bag and place them on a flat surface with a spacing of about 500 mm/ 20 inches.

2



Fold out the two supporting legs. Extend the legs to ensure that the supporting legs are locked into position.

3



If necessary, adjust the distance between the cassettes.

Insert the supporting legs into the cups located on the cassettes.

4



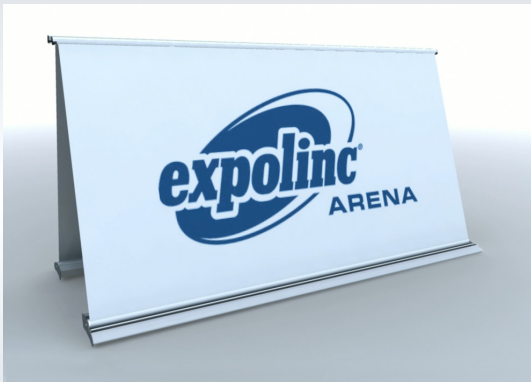
Take hold of top profile and pull up the graphic panel.

5



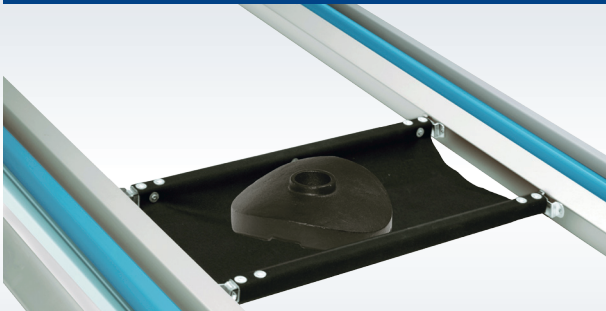
Attach the supporting legs to the brackets found at each end of the top profile.
Repeat steps 4 and 5 for the other side.

6



Verify that the system is level.

ACCESSORIES



As an extra option there is a separate secure device for severe weather.



Opportunities on display



**WE ARE CONSTANTLY DEVELOPING
AND IMPROVING OUR PRODUCTS!**

Further details about us, our assortment, new innovations, instructions and retailers etc. are available on our website www.expolinc.com.

